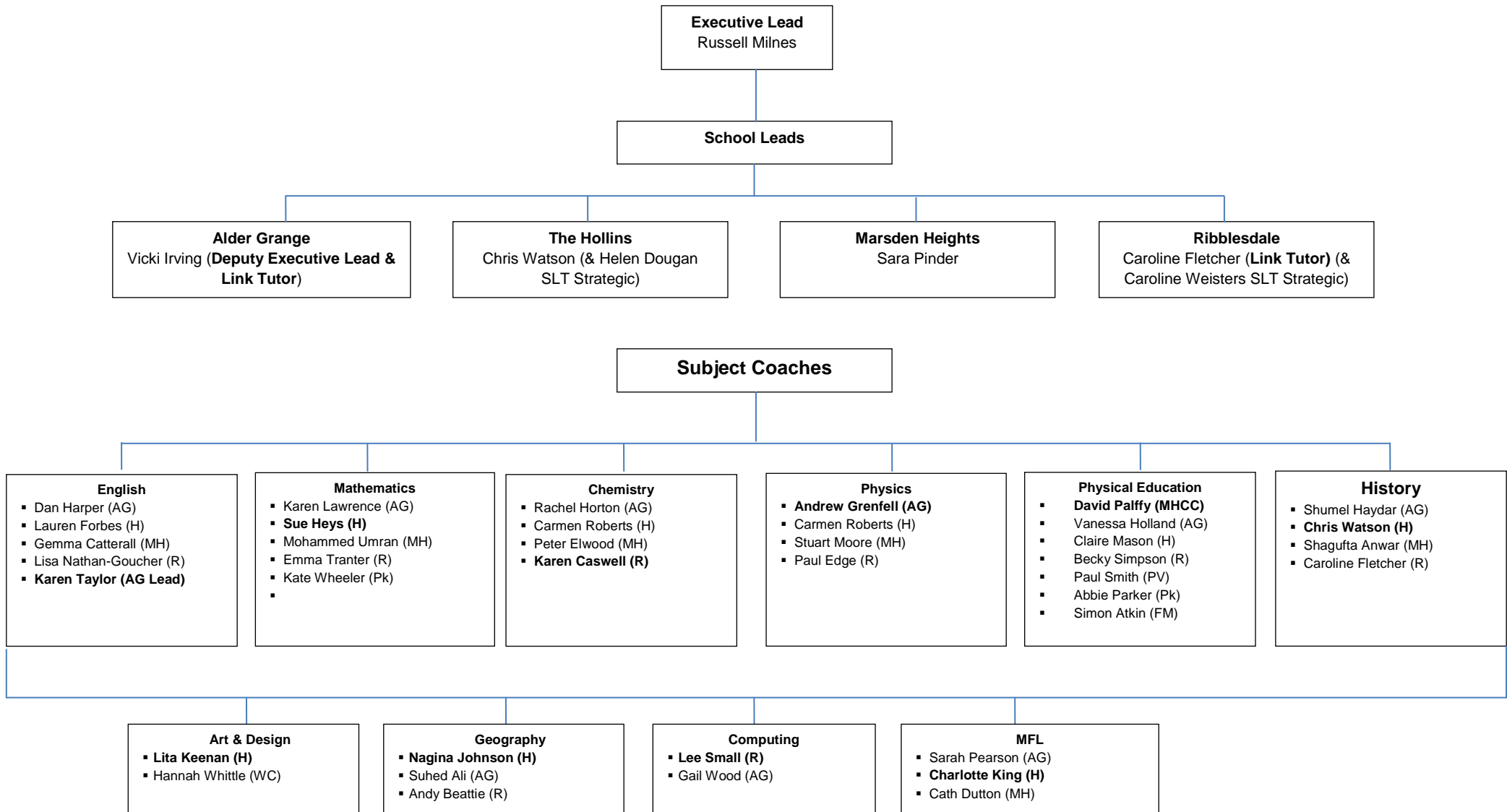


**Pennine Lancashire School-Centred Initial Teacher Training Partnership  
2016-17**



## Lead Practitioners

### Literacy

- Karen Taylor (AG) & Sarah Minton (MH)

### Numeracy

- Sue Heys (H)

### SEND

- Sarah Walmsley (AG) & Nyree Cirino (H)

### Behaviour Management

- Graeme Hunter (H)

### Citizenship

- Steve Price (MH)

### EAL

- Tibret Sarfraz & Rachel Groombridge (MH)